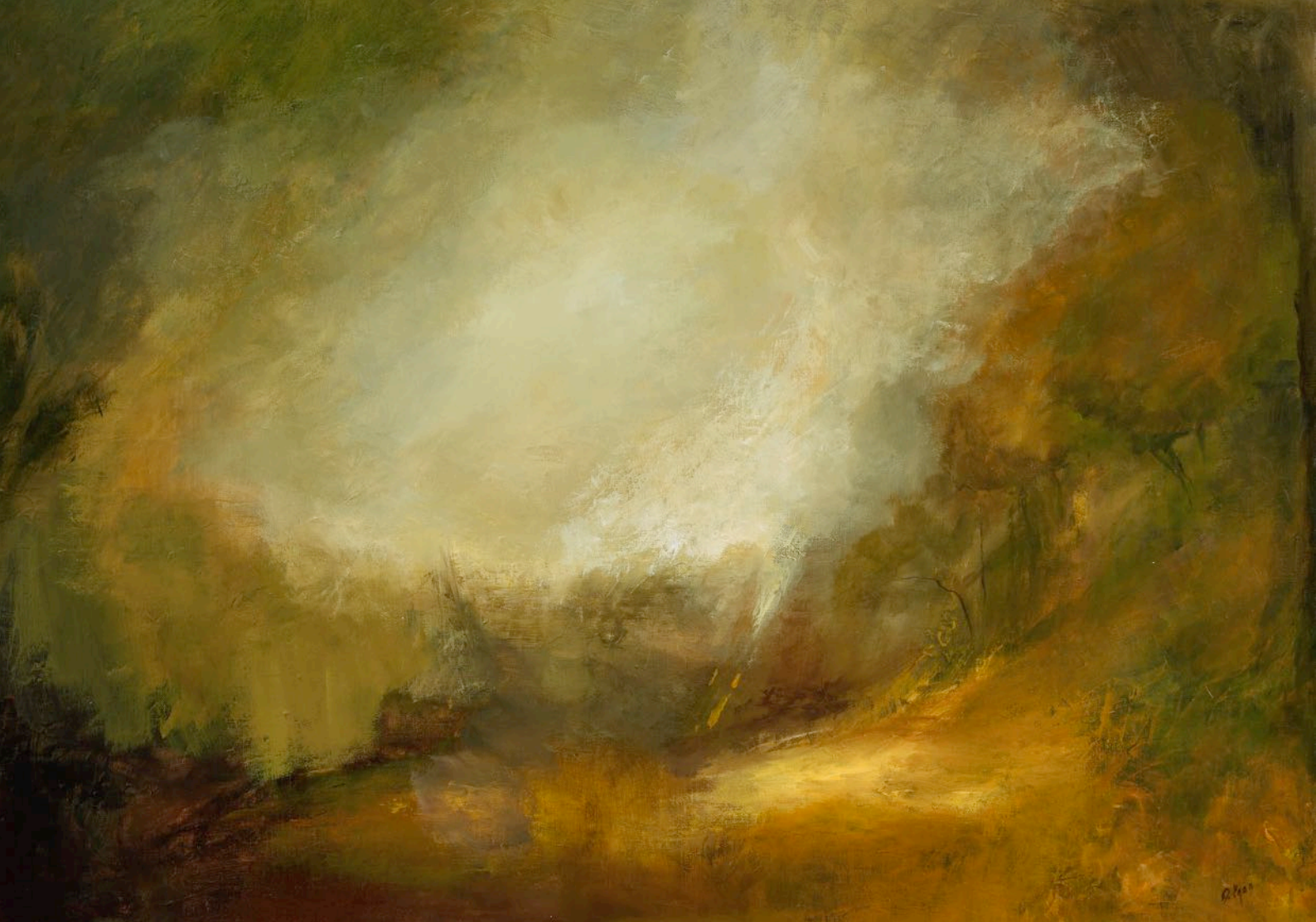




# MARGARET EGAN

*The Mythic Stories of Life and Landscape*



artists' agents  
art consultants  
gallery

solomon

Tara Murphy requests the pleasure of your company  
at the private view of

## MARGARET EGAN

### The Mythic Stories of Life and Landscape

to be opened by

**Terence O'Rourke**, *Chair, Hugh Lane Gallery Trust*

on

**Thursday 7 March 2024**

from 6pm to 8pm

The exhibition continues until Saturday 30 March 2024

Opening hours: Tuesday to Friday 10.00am – 5.30pm / Saturday: 11am – 4pm

Artworks may be viewed and acquired in advance at the gallery by appointment, via the Online Viewing Room  
at [www.solomonfineart.ie](http://www.solomonfineart.ie) - or simply scan the QR code below with your smartphone camera for prices and availability.

### Solomon Fine Art

Balfe Street, Dublin 2, D02 T802, Ireland

t: +353 (0)1 672 4429 / e: [info@solomonfineart.ie](mailto:info@solomonfineart.ie) / [www.solomonfineart.ie](http://www.solomonfineart.ie)

front cover: *FIELDS OF COUNTY OFFALY I (detail)*, acrylic on linen, 112 x 114 cm (see p. 19)

inside cover: *THE SINGING GRASSES*, acrylic on linen, 71 x 100 cm (see p. 19)

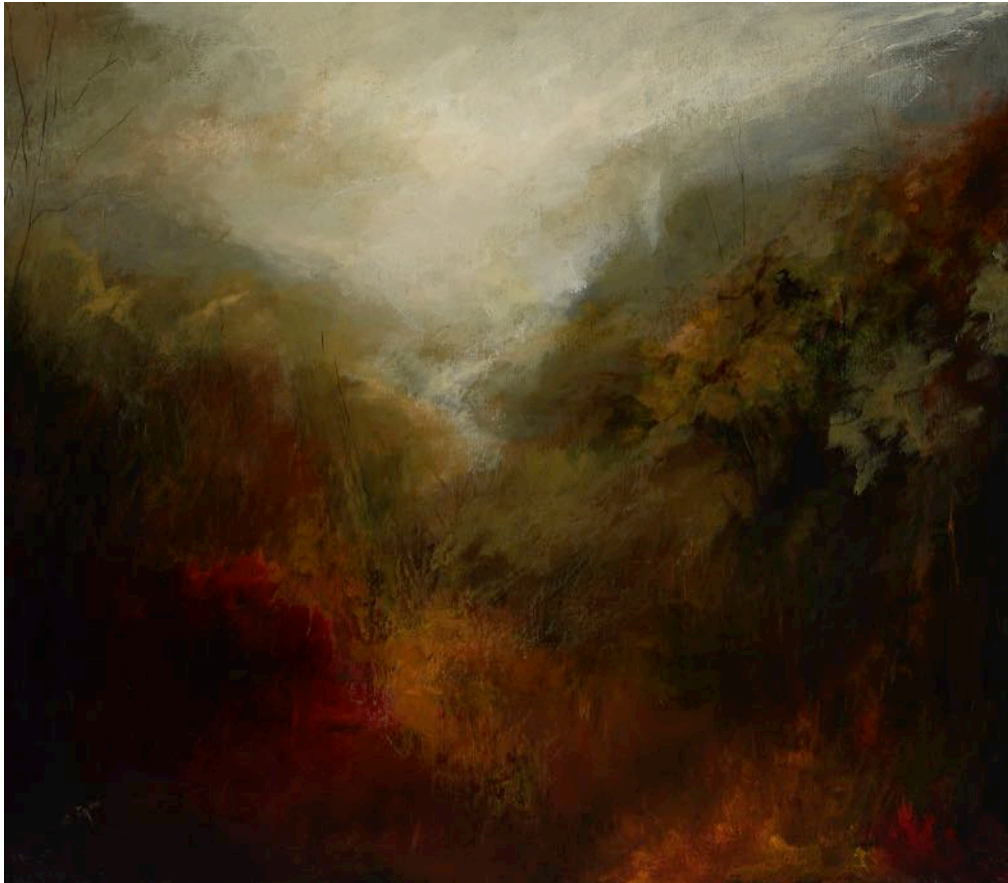




left:  
A SILENT PEACE  
SPREAD AROUND ME  
acrylic on linen  
66 x 76 cm

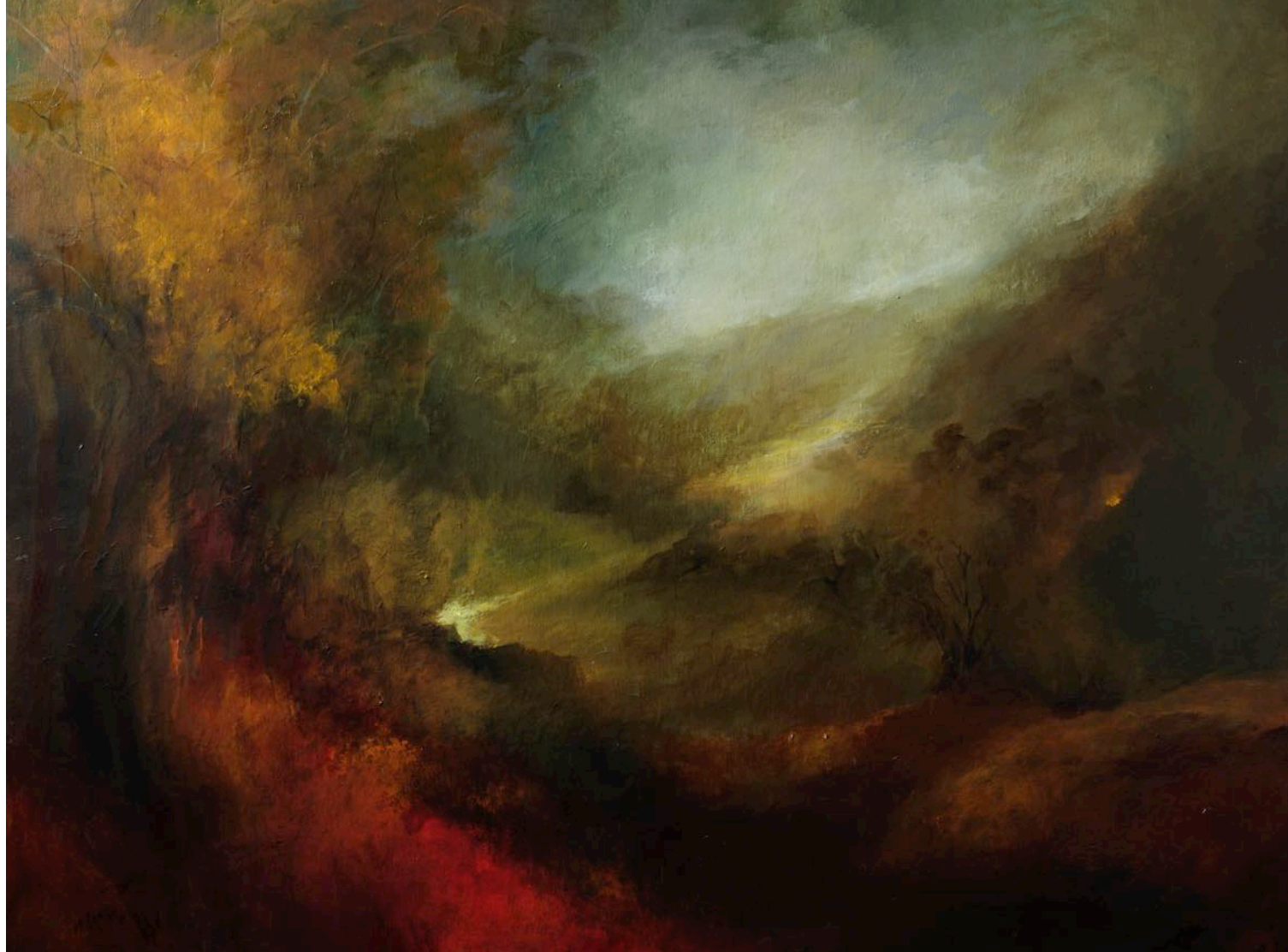
right:  
THE POIGNANT  
MUSIC OF LIFE  
acrylic on linen  
90 x 117 cm





left:  
WICKLOW WAY,  
GLENMALURE I  
acrylic on linen  
66 x 76 cm

right:  
KERRY LANDSCAPE  
acrylic on linen  
90 x 117 cm



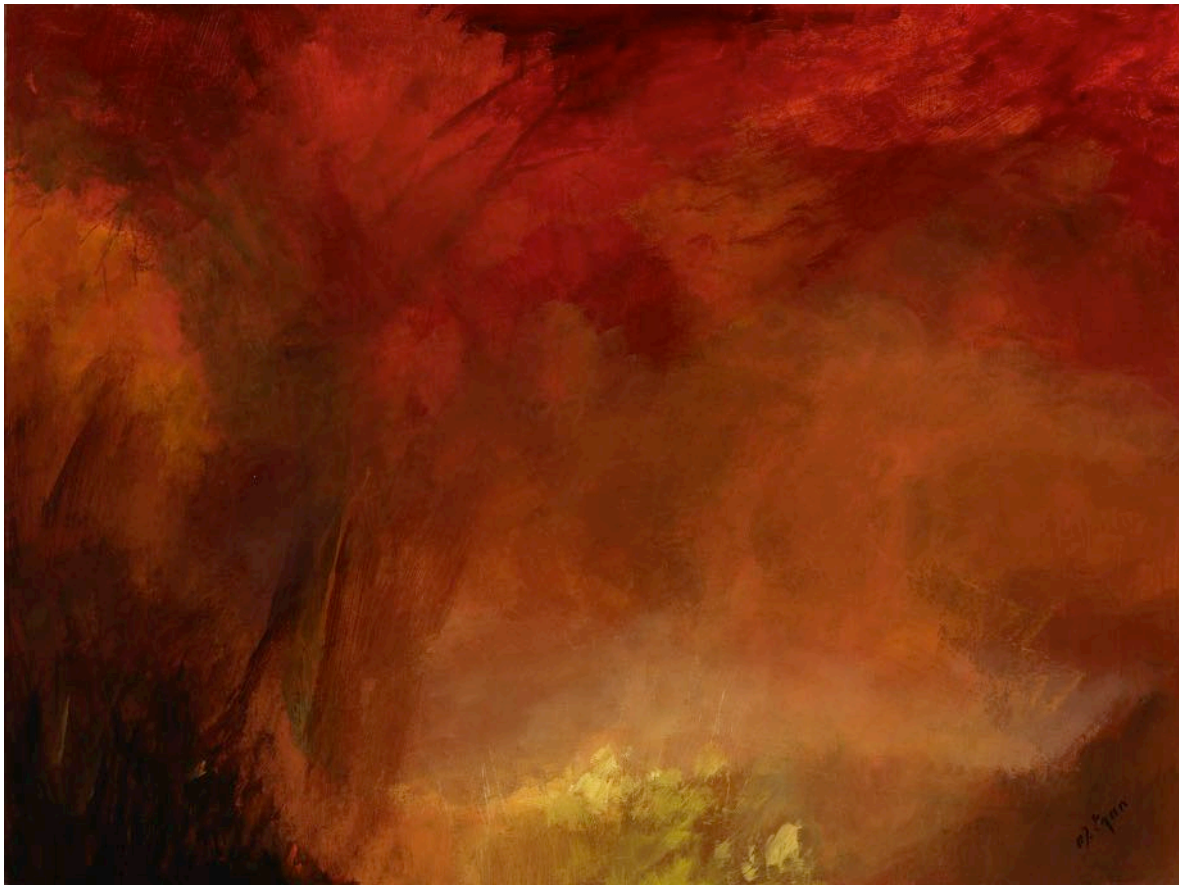


left:  
NATURE CAUGHT IN MY  
DREAMING HEAD  
acrylic on canvas  
30 x 25 cm

right:  
THE GREAT WHEEL OF LIFE  
KEEPS ON TURNING  
acrylic on linen  
70 x 100 cm

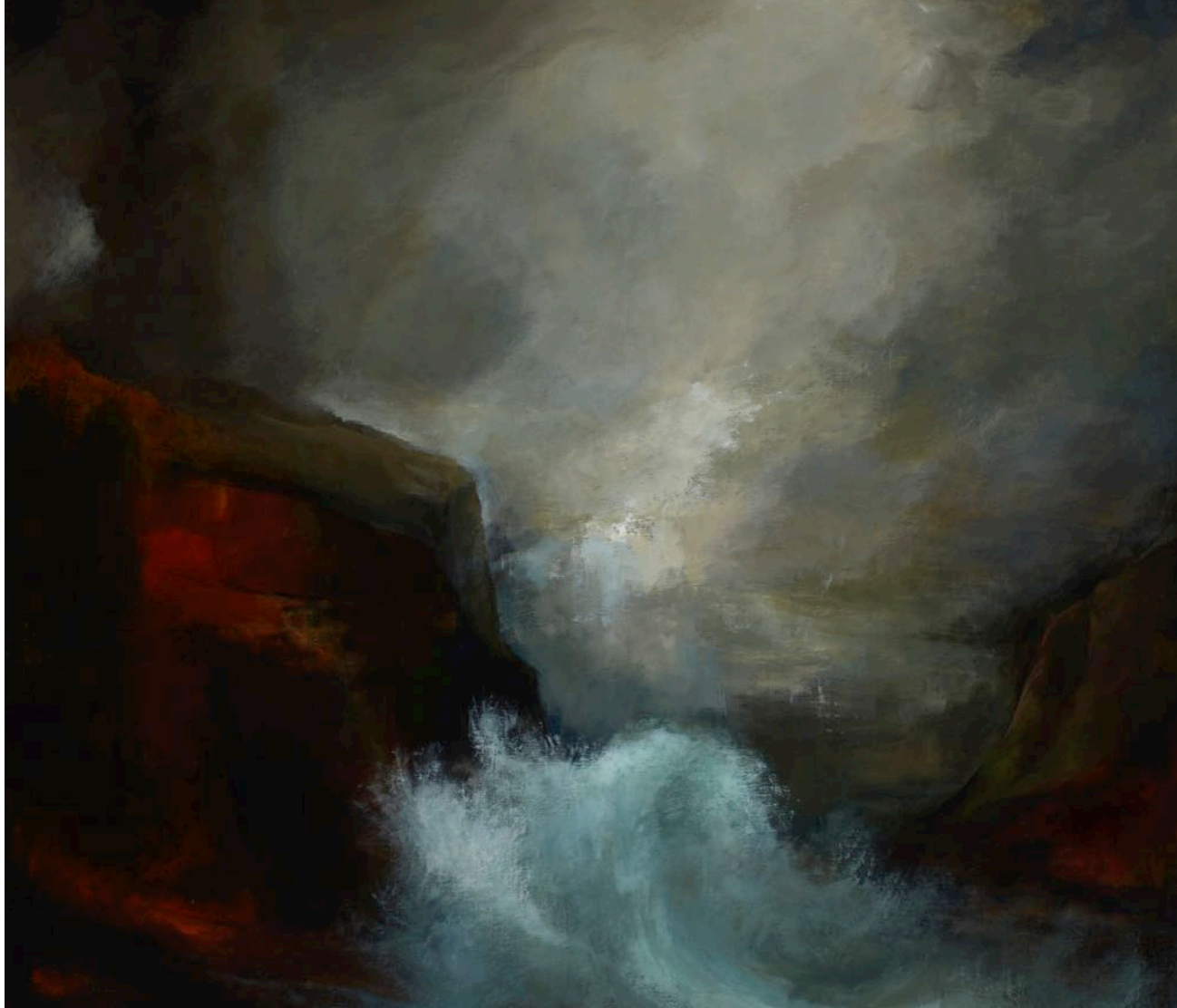






left:  
THE SCENT OF  
AUTUMN  
acrylic on board  
46 x 60.5 cm

right:  
INISHMAAN  
COASTLINE  
acrylic on linen  
112 x 114 cm

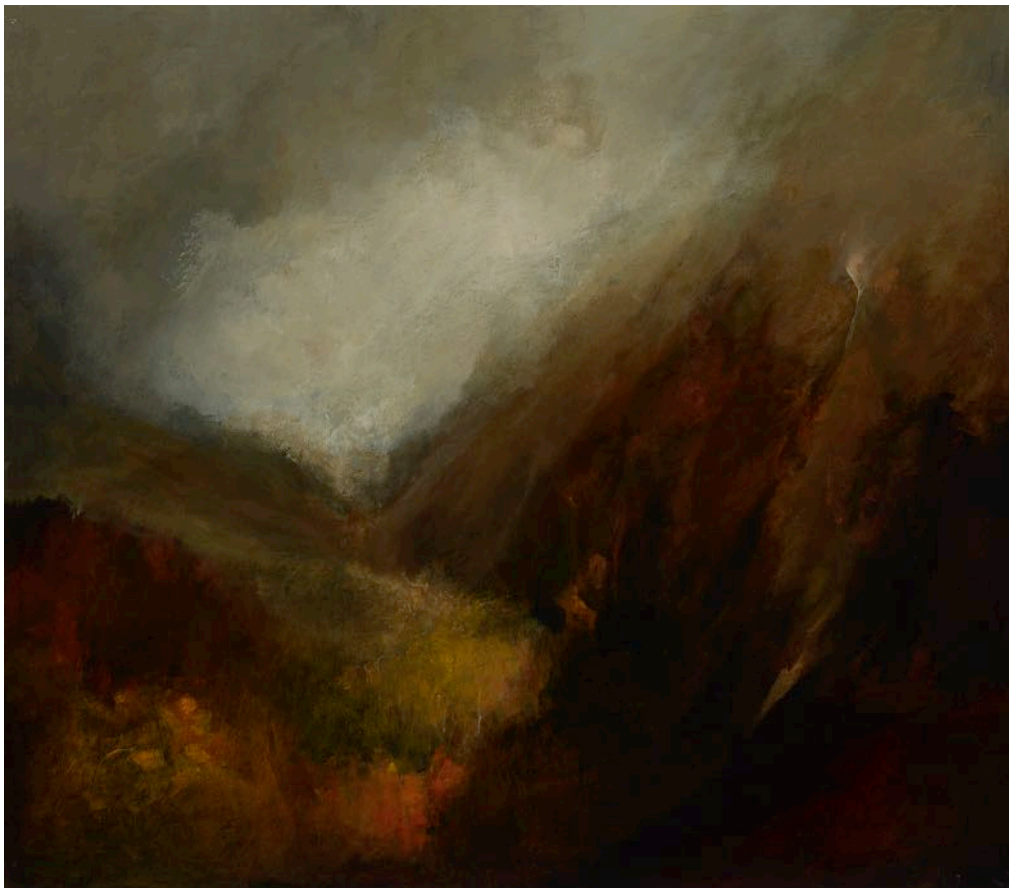




left:  
THE POWER OF  
POSSIBILITY  
acrylic on canvas  
35 x 45 cm

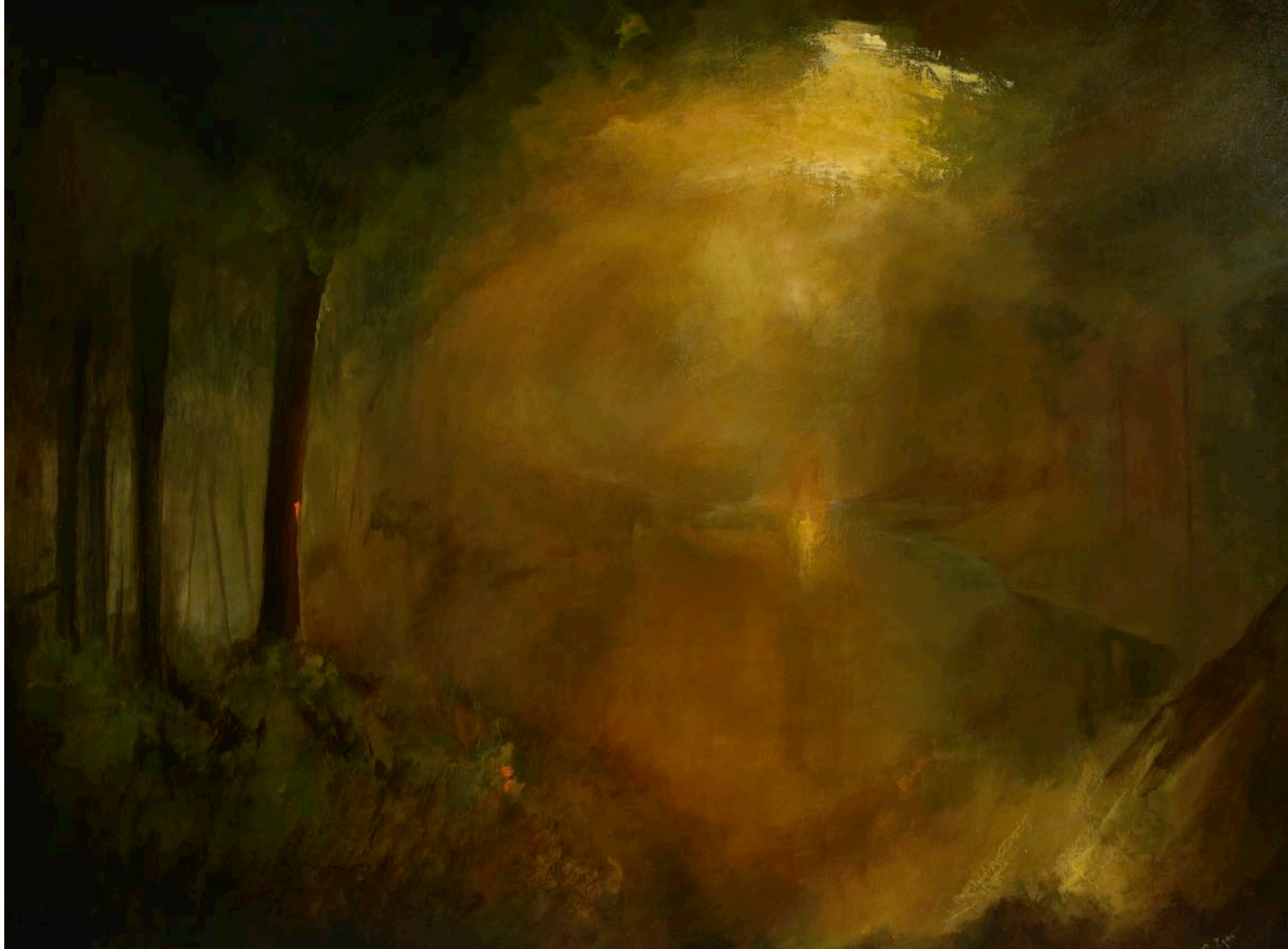
right:  
FRIENDSHIP IS THE  
POETRY OF LIFE  
acrylic on linen  
66 x 76 cm





left:  
WICKLOW WAY, TINAHELY  
acrylic on linen  
66 x 76 cm

right:  
THE DEEP AND  
TENDER EARTH  
acrylic on linen  
90 x 117 cm



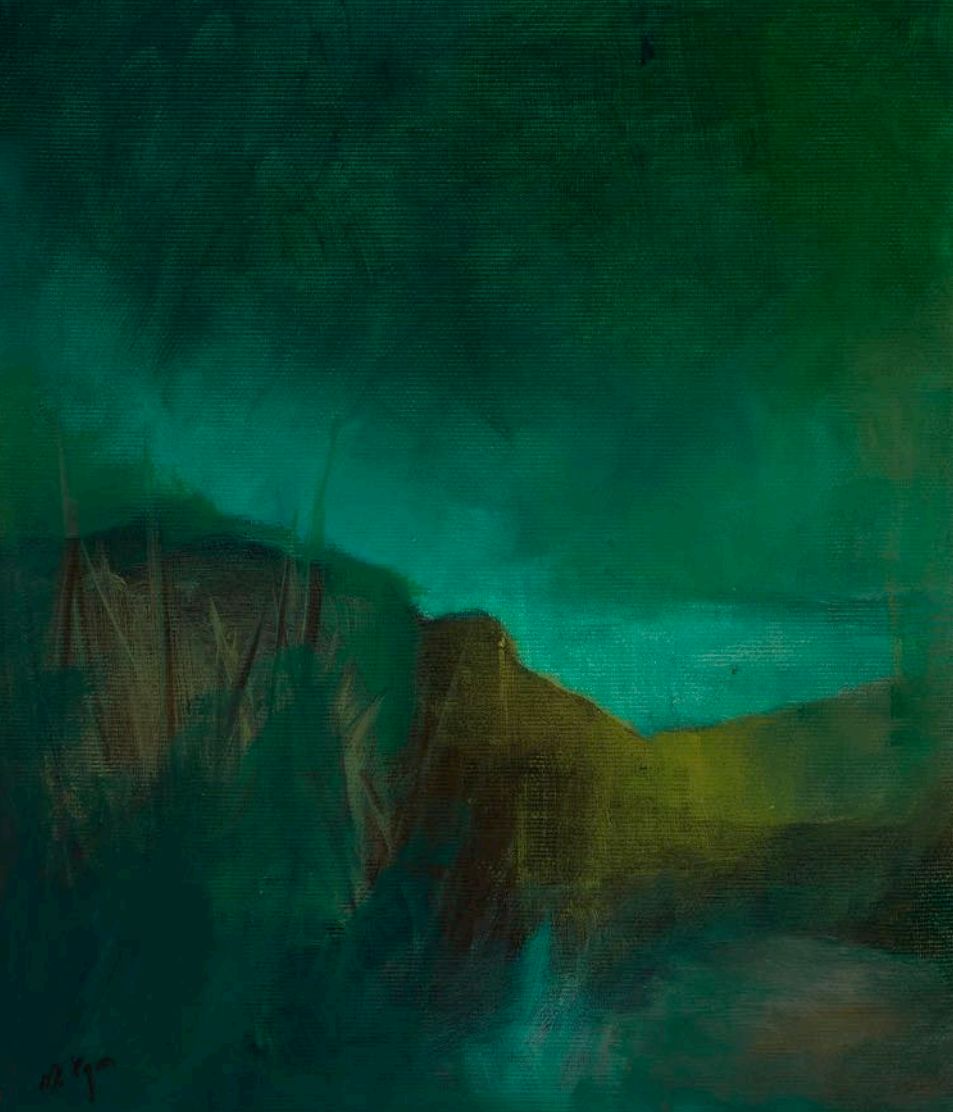


left:  
ACHILL ISLAND,  
COASTAL WATERS  
acrylic on linen  
76 x 66 cm

right:  
TIDES AGAINST  
THE SHORE  
acrylic on linen  
112 x 114 cm

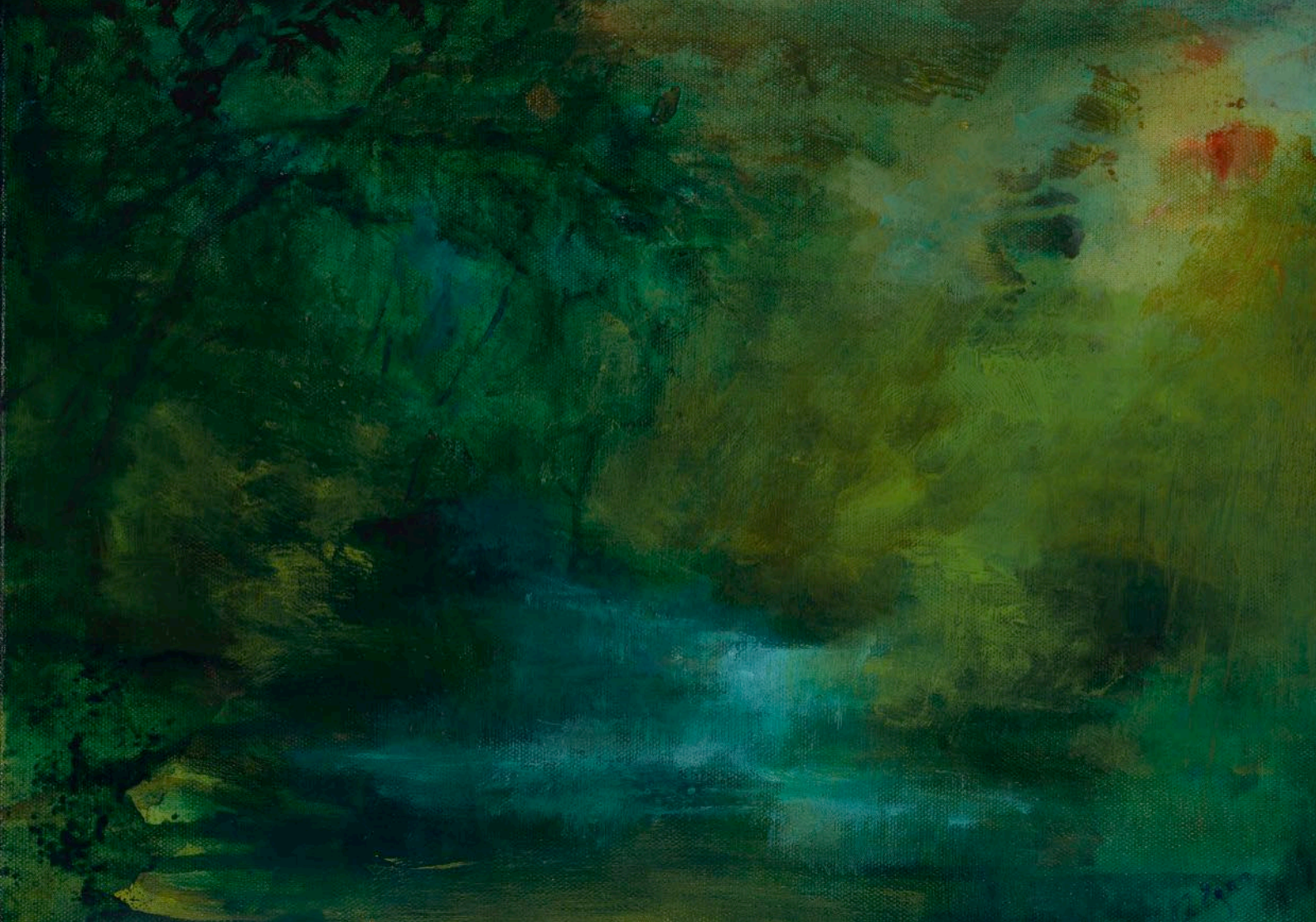


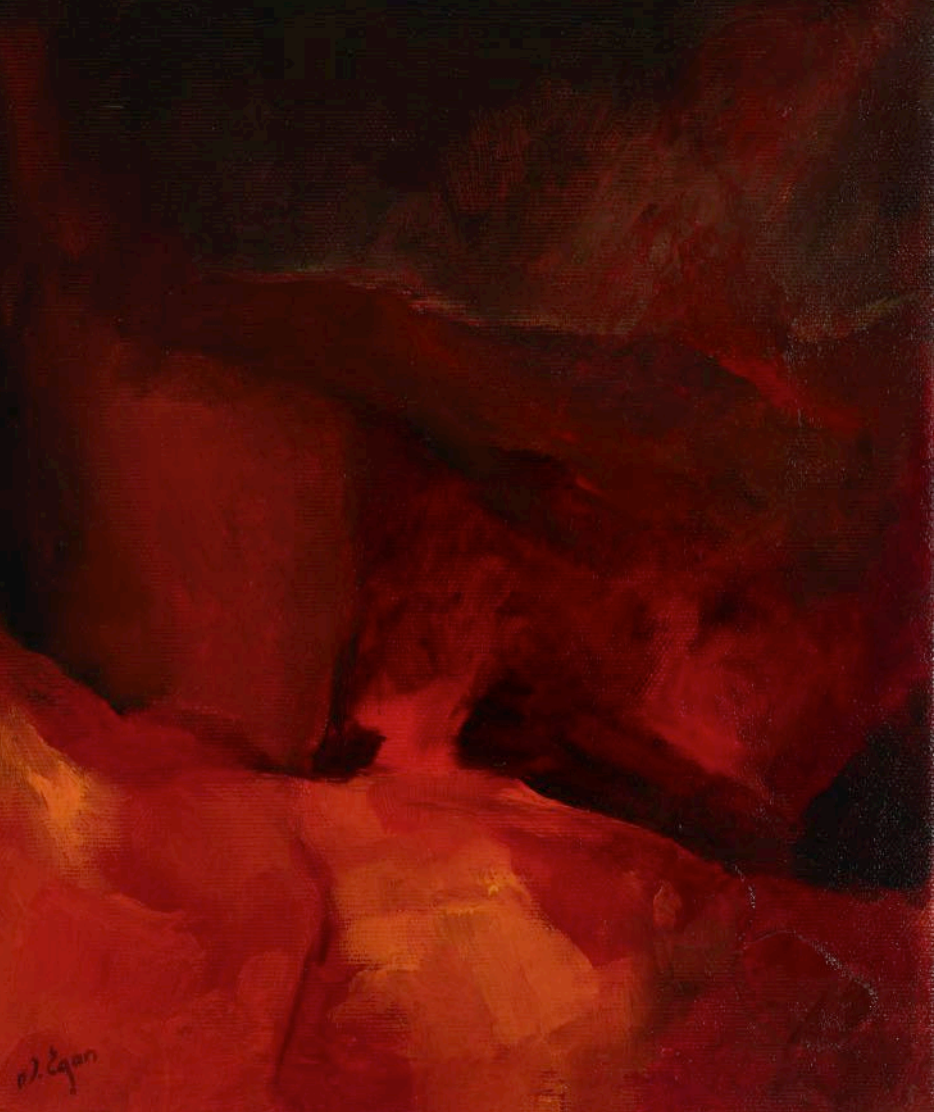




left:  
CLIFFS OF AUGHRIS  
HEAD, CO. SLIGO  
acrylic on canvas  
30 x 25 cm

right:  
THE HIDDEN LAKE PLAYED  
SOFTLY WITH COLOUR  
acrylic on canvas  
30 x 40 cm

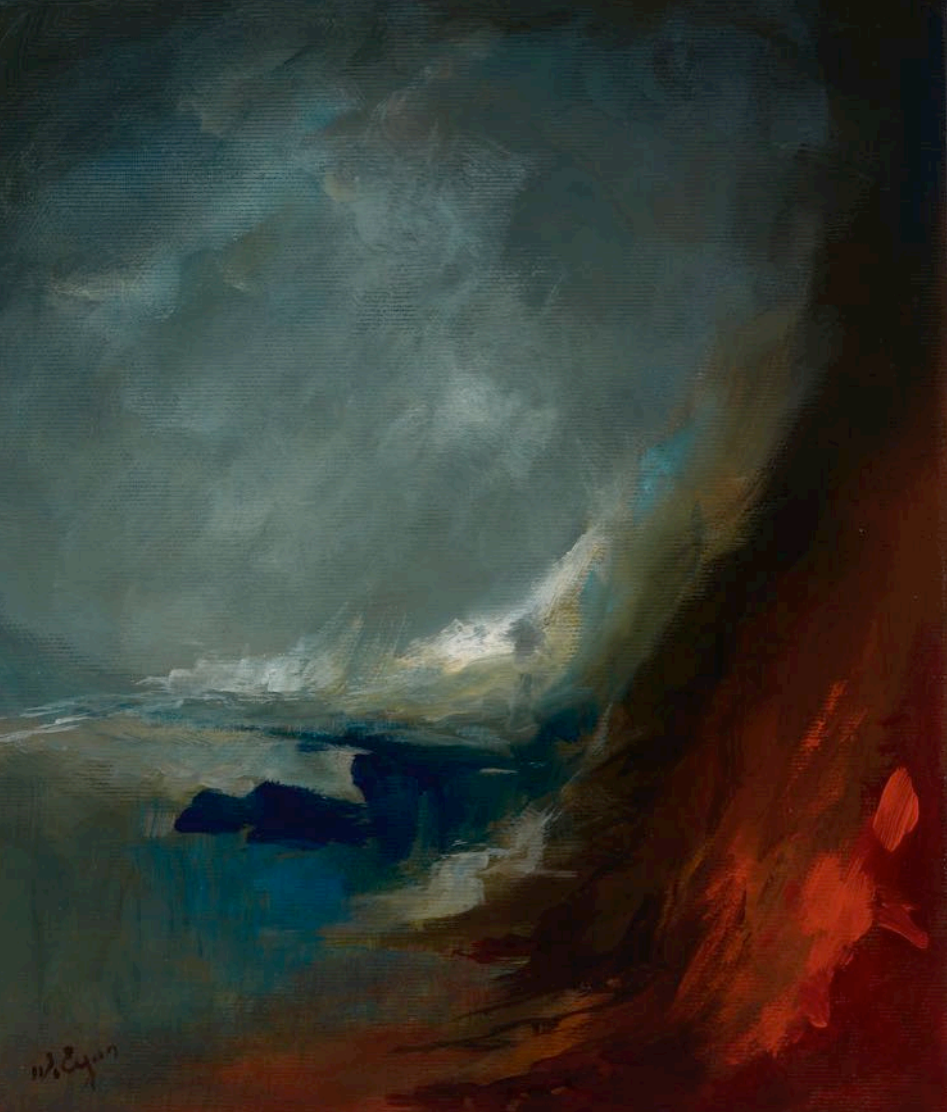




left:  
THE RED EARTH  
acrylic on canvas  
30 x 25 cm

right:  
FIELDS OF COUNTY OFFALY I  
acrylic on linen  
113 x 114 cm





left:  
THE CHORUS OF THE OCEAN  
acrylic on canvas  
30 x 25 cm

right:  
ALL SILENT WATCHING  
acrylic on linen  
70 x 100 cm



# MARGARET EGAN

## SOLO EXHIBITIONS

- 2024 The Mythic Stories of Life & Landscape, Solomon Fine Art, Dublin
- 2021 The Rhythm of our World, Solomon Fine Art, Dublin
- 2019 The Breath of Sound and Earth, Solomon Fine Art, Dublin
- 2017 A Slice of Life, Solomon Fine Art, Dublin
- 2015 Barbara Stanley Gallery, London
- 2014 Recent Paintings & Sculpture, Solomon Fine Art, Dublin
- 2013 Barbara Stanley Gallery, London
- 2012 Europe House, Smith Square, London
- 2011 Barbara Stanley Gallery, London
- 2010 Recent Paintings & Sculpture, Solomon Gallery, Dublin
- 2009 Courcoux & Courcoux Contemporary Art, Stockbridge  
Barbara Stanley Gallery, London
- 2008 Recent Paintings & Sculpture, Solomon Gallery, Dublin
- 2007 Barbara Stanley Gallery, London  
Courcoux & Courcoux Contemporary Art, Stockbridge
- 2006 Solomon Gallery, Dublin
- 2005 New Paintings, Courcoux & Courcoux Contemporary Art, Stockbridge
- 2004 Origin Gallery, Dublin
- 2003 Courcoux & Courcoux Contemporary Art, Stockbridge
- 2002 Breaking Horizons, Ashford Gallery, Royal Hibernian Academy, Dublin
- 2001 Salle de la Mairie de Bargemon, France
- 2000 Guinness Gallery, Dublin
- 1999 Leinster Gallery, Dublin
- 1998 Lavit Gallery, Cork
- 1997 Guinness Gallery, Dublin
- 1994 Wexford Arts Centre, Wexford  
Marymount Manhattan College Gallery, New York



## SELECTED GROUP EXHIBITIONS

- 2024 Solomon Fine Art, Dublin – annual spring, summer and winter group exhibitions (since 2013)
- 2019 Irish Cultural Centre, Hammersmith, London
- 2017 Art Fair, Driebergen, The Netherlands  
Three Irish Artists (with Ian Rawnsley and Emma Stroude), Galerie Terbeek, The Netherlands  
VUE National Contemporary Art Fair, RHA, Dublin (and subsequent years)
- 2016 Courcoux & Courcoux Contemporary Art, Stockbridge  
Barbara Stanley Gallery, London
- 2013 Courcoux & Courcoux Contemporary Art, Stockbridge
- 2012 Solomon Gallery, Dublin – annual spring, summer and winter group exhibitions (since 2002)
- 2003 Éigse, Carlow (also 2004, 2005)  
Leinster Gallery, Dublin (also 2008)
- 1997 Kent Gallery, Kinsale, Cork
- 1996 Cork Arts Society, Lavit Gallery, Cork (also 2003, 2004)
- 1995 Nancy Roche Gallery, Singapore
- 1994 Oriel Gallery, Dublin (also 1995)  
Portable Art, Phase II, Cardiff  
United Arts Club, Dublin
- 1993 Oireachtas, RHA Gallagher Gallery, Dublin  
Kenny Gallery, Galway (also 1994)  
Wexford Arts Centre, Wexford  
Annual Exhibitions, RHA, Dublin (also 1997)
- 1992-3 Womansense, touring two-person show (sponsored by Abbey Theatre): Wexford Arts Centre; County Hall, Portlaoise;  
Town Hall, Athy; County Library, Ennis; Midland Arts Resource Centre, Mullingar; Newry & Mourne Arts Centre
- 1991 National Maritime Museum, Dún Laoghaire
- 1984 RHA Annual Exhibition, Royal Hibernian Academy, Dublin (also 1986, 1988)

## BIBLIOGRAPHY

- 2024 Margaret Egan – Natural Harmony: 40 years of painting, ed. Niamh O’Sullivan, intro by Bernard Farrell, essay by Mark Ewart (Gandon Editions Kinsale)
- 2021 Exhibition preview by Penny McCormick, The Gloss, 21.10.21

- 2019 'What's On', Irish Arts Review, vol. 35, no. 4, Winter 2018; 'Picture Perfect', Image Magazine, March
- 2017 The unveiling of The Movement of Sound at National Concert Hall, Sunday Business Post, 20.6.17  
 'Art for the Heart, Through Eyes and Ears', Gemma Tipton, Irish Times Magazine, 19.8.17;  
 'From Glimpse to Panorama', review by Susan Campbell, Irish Arts Review, vol. 34, no. 4
- 2014 'What Lies Beneath': Yellow Bloom by Margaret Egan, Niall MacMonagle, Sunday Independent;  
 Review by Jacqueline Strawbridge, Irish Daily Mail
- 2008 'Figure in a Landscape', Gerry Walker, Irish Arts Review, vol. 25, no. 2, summer, pages 72-73
- 2006 Catalogue intro by Desmond Egan (Solomon Gallery); Review by Sophie Gorman, Irish Independent, 19.8.06
- 2005 Solomon Gallery – review by Julia Moloney, Sunday Independent, Oct
- 2002 Ashford Gallery, RHA – review by Ciara Ferguson, Sunday Independent, 13.1.02;  
 Review by Aidan Dunne, Irish Times, 23.1.02; Review by Myles McWeeney, Irish Independent, 15.1.02
- 1998 Lavit Gallery – review by Alannah Hopkins, Irish Times; Review by Mark Ewart, Irish Times, 24.9.98
- 1994 Marymount Manhattan College, NY – review by Emer Mullins, The Irish Voice, Sept

#### COLLECTIONS

Irish Embassy, London  
 National Concert Hall, Dublin  
 Deloitte  
 Enterprise System Partner, Cork  
 Hollister Inc., Illinois, USA  
 Abbey Theatre, Dublin  
 United Beverages, Dublin  
 United Drugs plc, Dublin  
 Inchydoney Hotel, Clonakilty, Co Cork  
 An Bord Pleanála, Dublin  
 Marymount Manhattan College, New York

First published in 2024 by Solomon Fine Art  
 ISBN: 978-1-7394326-6-9  
 © Solomon Fine Art and the artist

back cover: *THE LANDSCAPE OF OUR INNER WORLD*, acrylic on linen, 71 x 100 cm

# MARGARET EGAN

## *The Mythic Stories of Life and Landscape*

Fields of County Offaly I	acrylic on linen	113 x 114 cm
Inishmaan Coastline	acrylic on linen	112 x 114 cm
Tides Against the Shore	acrylic on linen	112 x 114 cm
The Deep and Tender Earth	acrylic on linen	90 x 117 cm
The Poignant Music of Life	acrylic on linen	90 x 117 cm
Kerry Landscape	acrylic on linen	90 x 117 cm
The Landscape of Our Inner World	acrylic on linen	71 x 100 cm
The Singing Grasses	acrylic on linen	71 x 100 cm
All Silent Watching	acrylic on linen	70 x 100 cm
The Great Wheel of Life Keeps Turning	acrylic on linen	70 x 100 cm
Friendship is the Poetry of Life	acrylic on linen	66 x 76 cm
Achill Island Coastal Waters	acrylic on linen	76 x 66 cm
A Silent Peace Spread Around Me	acrylic on linen	66 x 76 cm
Wicklow Way, Glenmalure I	acrylic on linen	66 x 76 cm
Wicklow Way, Tinahely	acrylic on linen	66 x 76 cm
Secrets Held Inside the Movement	acrylic on linen	66 x 76 cm
The Scent of Autumn	acrylic on board	46 x 60.5 cm
Vulnerabilty & Growth	acrylic on canvas	35 x 45 cm
The Power of Possibility	acrylic on canvas	35 x 45 cm
The Hidden Lake Played Softly with Colour	acrylic on canvas	30 x 40 cm
Cliffs of Aughris Head, Co. Sligo	acrylic on canvas	30 x 25 cm
Searching	acrylic on linen	30 x 25 cm
The Chorus of the Ocean	acrylic on canvas	30 x 25 cm
The Red Earth	acrylic on canvas	30 x 25 cm
Nature Caught in my Dreaming Head	acrylic on canvas	30 x 25 cm



SOLOMON FINE ART

Balfe Street, Dublin 2, D02 T802, Ireland

t: +353 (0)1 672 4429 / e: [info@solomonfineart.ie](mailto:info@solomonfineart.ie) / [www.solomonfineart.ie](http://www.solomonfineart.ie)

t: +353 (0)1 672 4429 / e: [info@solomonfineart.ie](mailto:info@solomonfineart.ie) / [www.solomonfineart.ie](http://www.solomonfineart.ie)